



# LOG it EASY

<https://logiteasy.com>

**We are LOGitEASY. Our mission is  
to improve the way geologists  
log soil and create  
boring logs & report figures.**

# About us



**2004**

ESTABLISHED  
IN 2004



**1300+**

GEOLOGISTS  
SERVED



**70%**

OF CLIENTS  
HAVE BEEN  
WITH US FOR  
> 4 YEARS



**65%**

OF REVENUE  
IS REPEAT  
BUSINESS

# Client References

## Time & Cost Savings

The LOGitEASY eForm has resulted in huge savings of time both in the field and for reducing transcriptional errors from entering data from paper logs. We are really glad to have this capability now.

*Gilbane, Colton Ranson, Environmental Geologist II, CA*

## Ease of Use

I love your guys online drafting service. It is easy to use, fast, and the product is great quality. No hassles.

*Nicolas Pushckor, Associated Environmental Group, LLC*

## Quality & Timeliness

My experience with the work that has been done on my projects has been great - easy to work with, quick on the turn-around, and a high-quality product.

*Envirosolve Corporation, Project Manager, CA*

## Personalized Service

We submitted work requests for vapor probe logs, which were completed by LOGitEASY, and then their partner company ICD Services added the vapor probes to the existing site map and cross sections. All of our drafting needs for this phase of work were met from a single engagement.

*Innovex Environmental Management, Inc., Project Manager, WA*

# Our Service Lines

| 01



## Online Soil Logging Software:

DIY – Boring Logs Online

DIY – Geologic Cross Sections

| 02



## GIS Mapping Software:

DIY – Topographic Maps

DIY – Site Plans

DIY – Groundwater Contour Maps

| 03



## Fixed-Price Drafting Services:

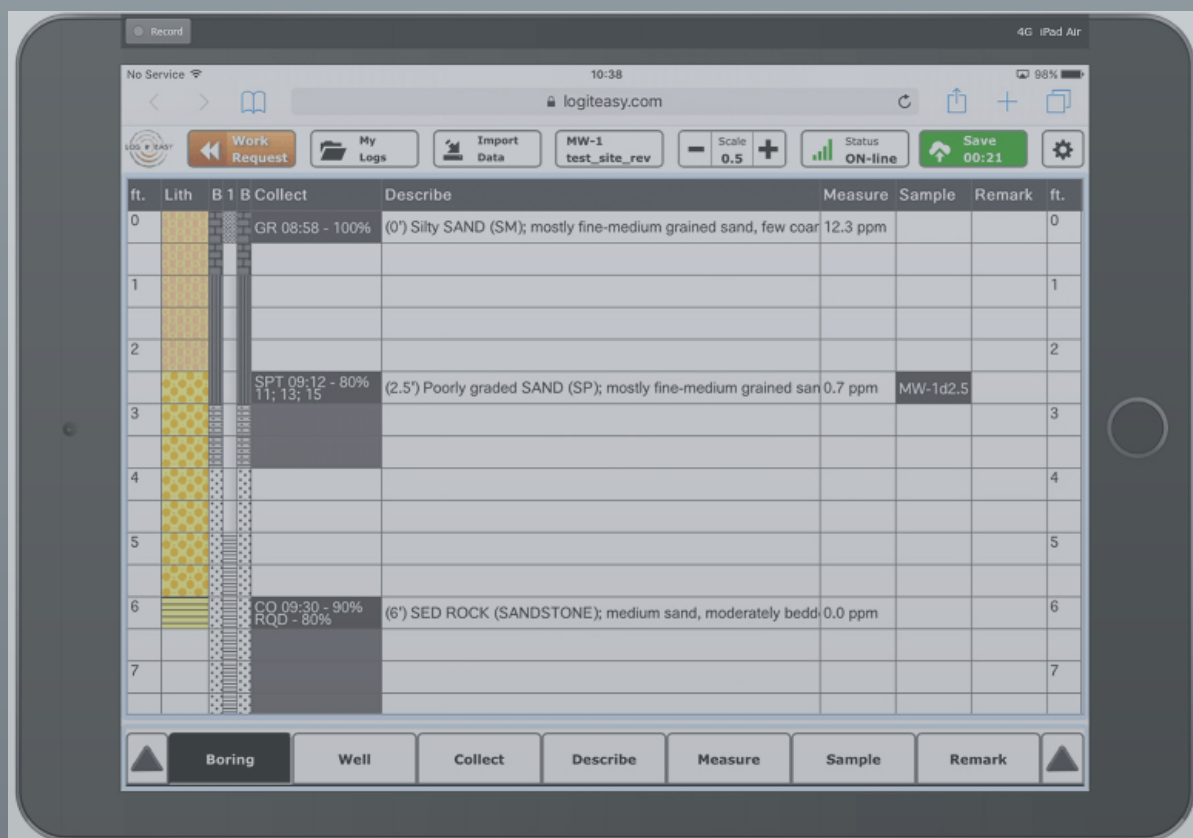
Boring Logs from Field Notes

Environmental Figures

# 1



## Online Soil Logging Software: DIY - Boring Logs Online DIY – Geologic Cross Sections



# Online Soil Logging Software



<b>YOUR LOGO</b>	<b>Client:</b> ABCD	<b>WELL LOG</b>
	<b>Project:</b> 06722	<b>Well No.</b> MW-102
	<b>Address:</b> Test Hills Avenue, Testfield, CT	<b>Page:</b> 1 of 1

<b>Drilling Start Date:</b> 08/10/2018	<b>Boring Depth (ft):</b> 15.2	<b>Well Depth (ft):</b> 15.5
<b>Drilling End Date:</b> 08/10/2018	<b>Boring Diameter (in):</b> 8.00	<b>Well Diameter (in):</b> 2.0
<b>Drilling Company:</b> Geosearch	<b>Sampling Method(s):</b>	<b>Screen Slot (in):</b> 0.010
<b>Drilling Method:</b> Hollow Stem Auger	<b>DTW During Drilling (ft):</b> N/A	<b>Riser Material:</b> Sch 40 PVC
<b>Drilling Equipment:</b> CME 75	<b>DTW After Drilling (ft):</b> 8.3	<b>Screen Material:</b> Sch 40 PVC Slotted
<b>Driller:</b> Justin Emma	<b>Top of Casing Elev. (ft):</b>	<b>Seal Material(s):</b> Bent. Chips
<b>Logged By:</b> MB	<b>Location (Lat. Long):</b>	<b>Filter Type:</b> #2

DEPTH (ft)	LITHOLOGY	WATER LEVEL	COLLECT			SOIL/ROCK VISUAL DESCRIPTION	MEASURE		DEPTH (ft)
			Sample Type	Time	Flow Counts		Recovery (ft)	PTD (gpm)	
0	(0') Concrete								0
1.1	(0.5') Silty GRAVEL with sand (GM); few fine-coarse grained gravel, some fine-medium sand, some silt, dark brown								1.1
2.1	(2') Silty GRAVEL with sand (GM); few fine-coarse grained gravel, some fine-medium sand, some silt, dark brown								2.1
2.6	(4') As Above								2.6
2.6	(8') Silty SAND (SM); little fine-medium grained sand, some silt, well-graded, loose, moist, pale brown								2.6
1.4	(8') Silty SAND (SM); little fine-medium grained sand, some silt, well-graded, very loose, wet, light brown								1.4
1.0	(9') Poorly graded SAND with silt (SP-SM); mostly medium-coarse grained sand, little silt, trace clay, loose, wet, dark yellowish-brown								1.0
0.0	(12') As Above								0.0
2.8	(14') Silty SAND (SM); mostly fine grained sand, some silt, well-graded, wet, light brown								2.8
	(15.2') Boring terminated								

NOTES: Hole predrilled to 5.0' on 08/10/2018 by Geosearch using air knife.

## Pricing

### All-You-Can-Log

\$49/month (billed annually)

\$99/month (billed monthly)

Free Geologic Cross Sections

10 Free GIS Figures/month

Team, Company, Enterprise Plans available

### Pay-As-You-Go

\$10/log (env. or geotech, gINT / LogPlot / etc. data)

\$25/log (custom template, + data)

Free Geologic Cross Sections

### FREE

Free soil logging and logs (pdf deliverable)

# 2

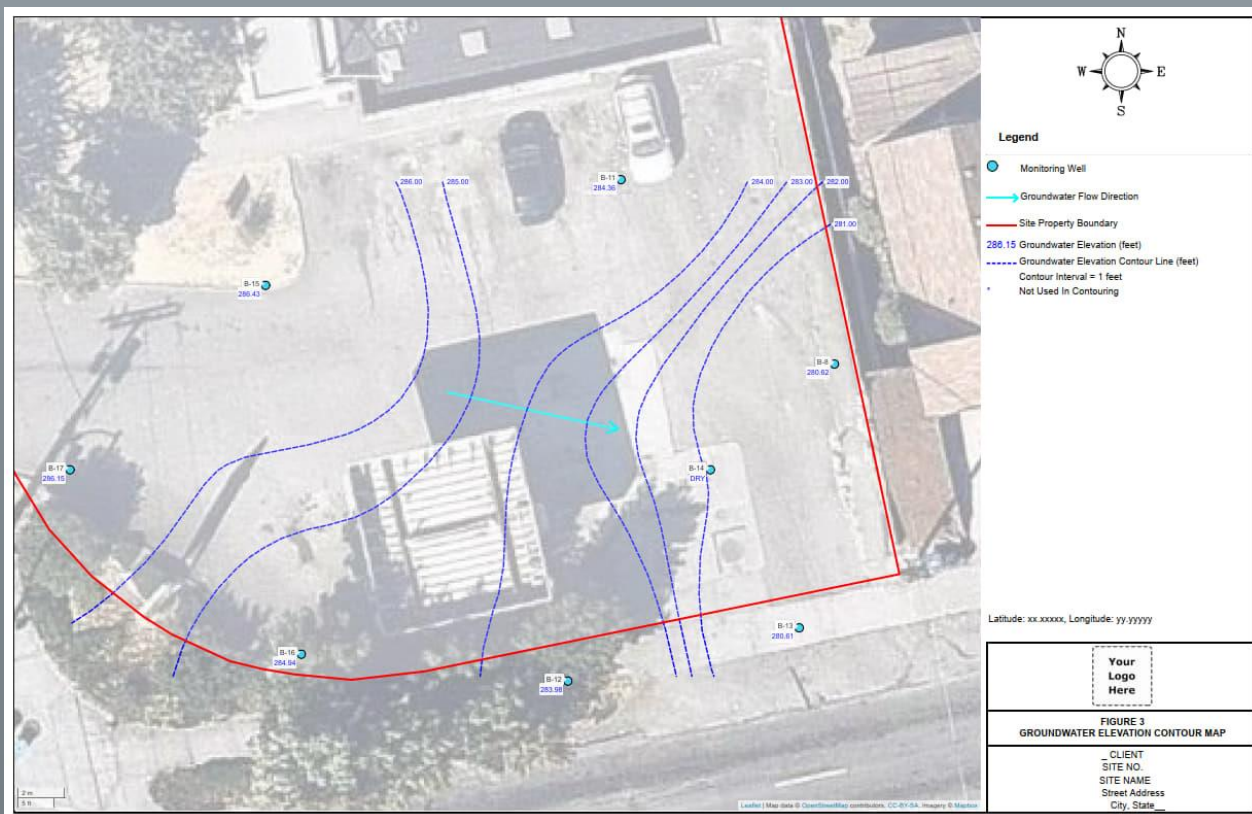


## GIS Mapping Software:

DIY – Topographic Maps

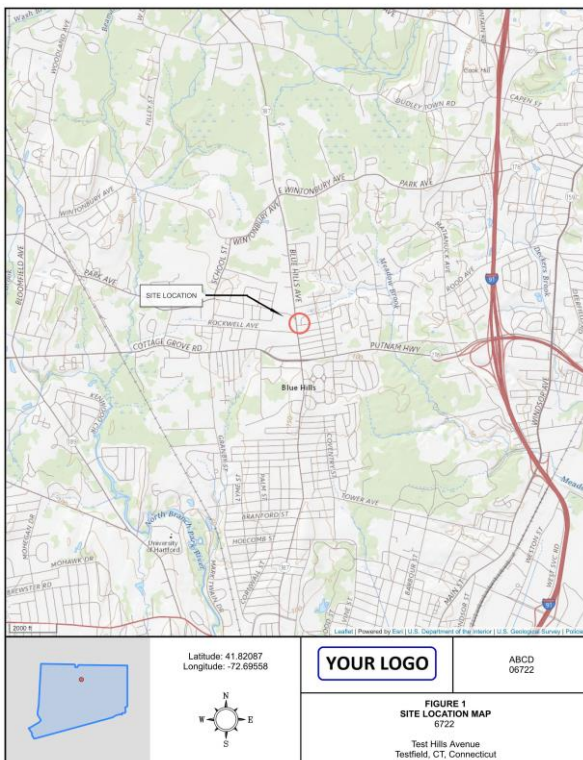
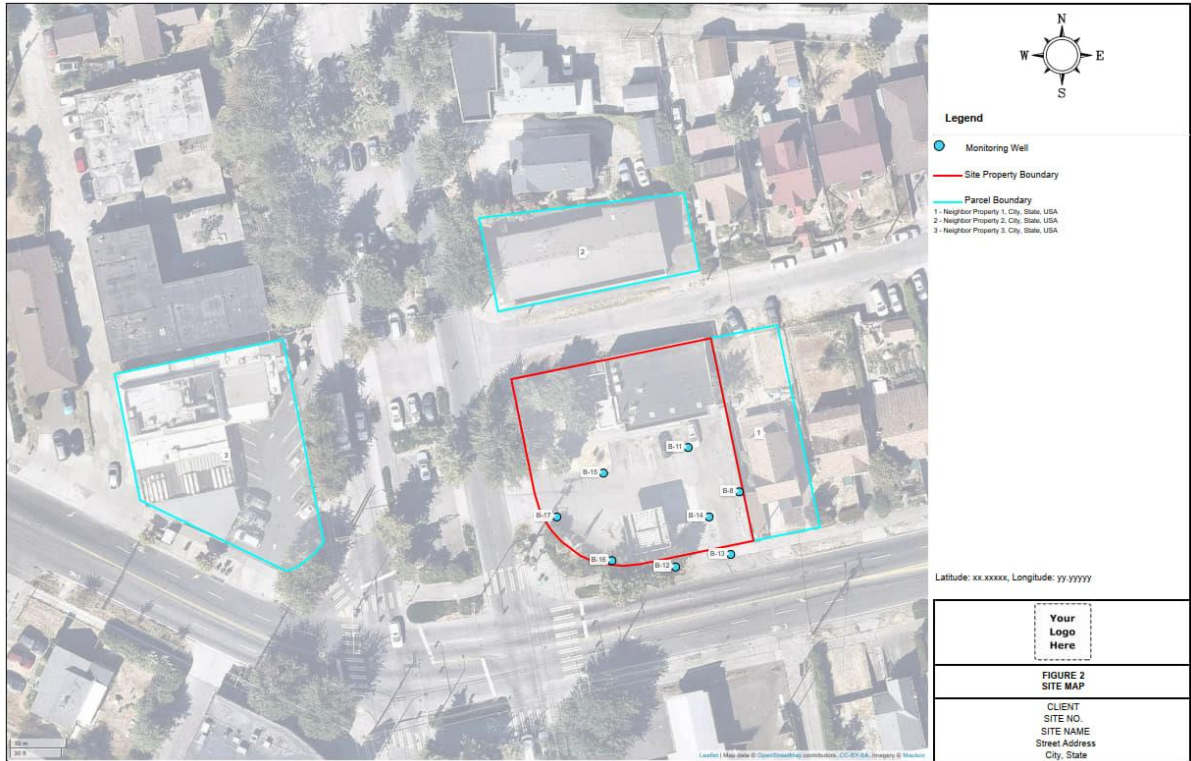
DIY – Site Plans

DIY – Groundwater Contour Maps





# GIS Mapping



## Pricing

### Subscription

\$49/month (billed annually)

\$99/month (billed monthly)

### Pay-As-You-Go

\$10/site location map or site plan

\$15/groundwater contour map

\$20/five figures

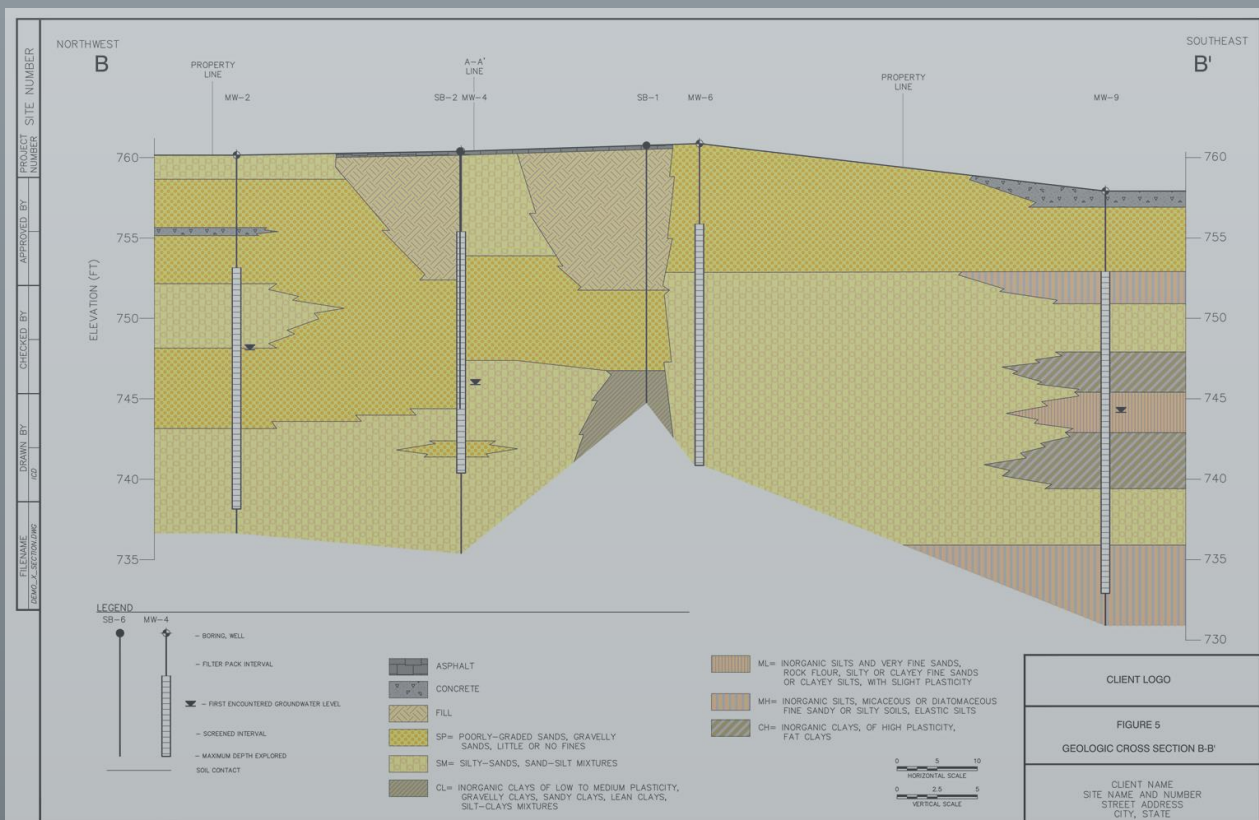
### FREE

- 10 Free GIS figures/month included with All-You-Can-Log subscription
- USA property parcel boundary database
- Aerial, Terrain, USGS Topo, etc. background maps

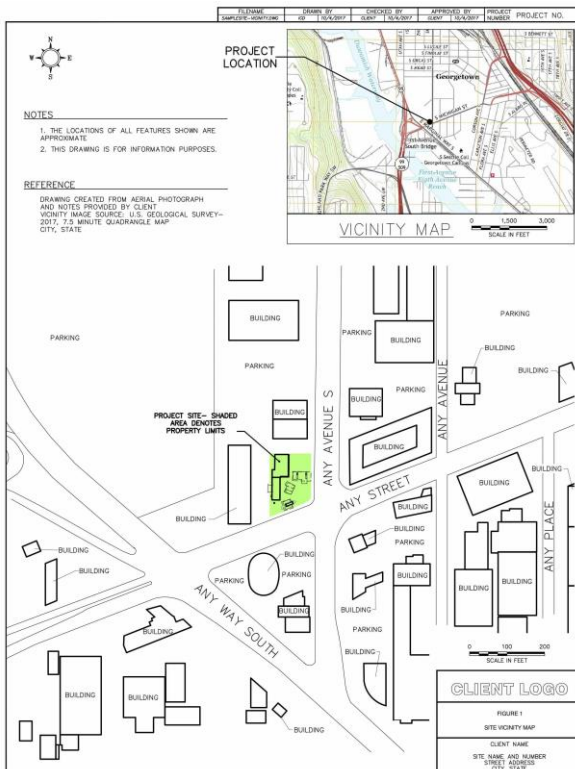
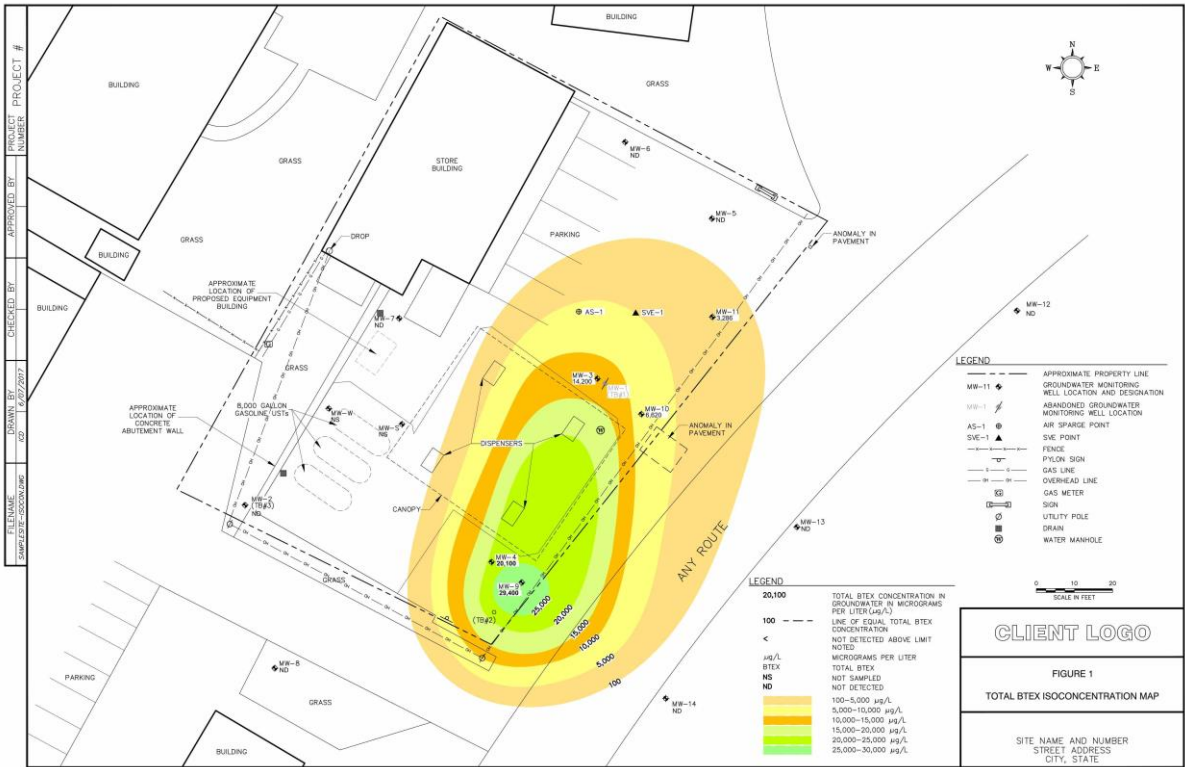
# 3



## Fixed-Price Drafting: Boring Logs from Field Notes Environmental Figures



# Fixed-Price Drafting



## Pricing

### Site Plans

\$50/figure

### Contour / Analytical Maps

\$35/figure

### Boring Logs from Field Notes

\$35/log (gINT® or LogPlot®)

### Geologic Cross Sections

\$80/cross section

### Time & Material Drafting

\$40-80/hour



**Ansis Guslens**

(312) 239-0505

[ansis@logiteasy.com](mailto:ansis@logiteasy.com)

<https://logiteasy.com>